



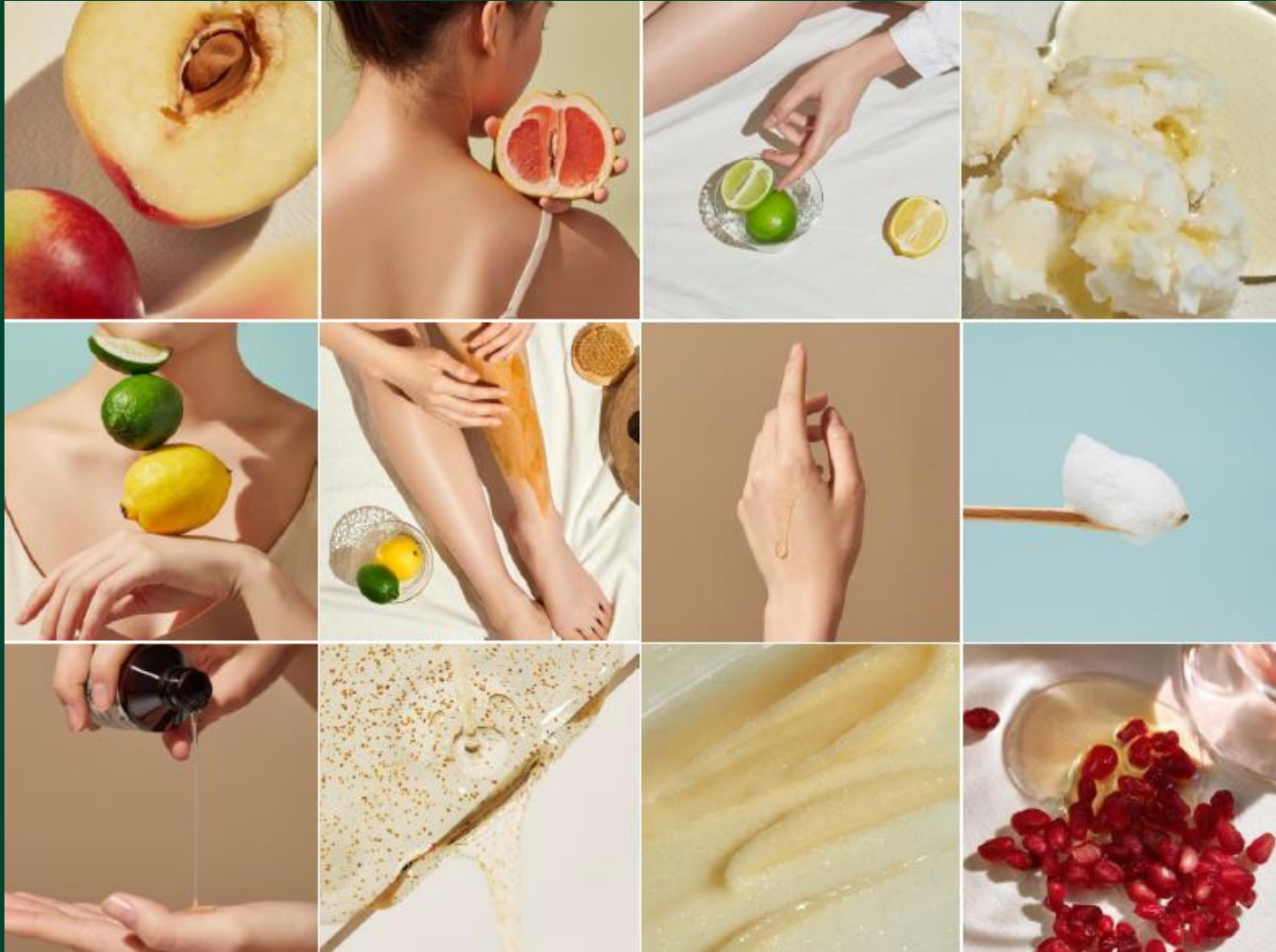
plu INSPIRED BY NATURE

Online & Offline
PRODUCT CATALOG
ZIVON cosmetic co.,ltd

Plu original products line

plu
CARE BY NATURE

‘Inspired by nature’



Original Body Scrub

plu

CARE BY NATURE

Soft walnut body scrub provides 3-in-1 total body care effects that exfoliate, moisturize and shines skin.

Highly moisturizing and gentle exfoliating formula blend leaves skin soft, smooth, and nourished after every wash.

All-in-one care eliminates the need for additional oil or cream products to add moisture to the skin after cleansing.



- ❖ 100% natural soft California walnut shell optimized for exfoliating and moisturizing.
- ❖ The walnut shell packed with proteins, antioxidants, fibre and minerals all in one shot, also famous for its softness as an exfoliators . Compare to sugar or salt based scrub, walnut shell is much smoother than any other ingredients.
- ❖ All worry-free (Paraben-free / Venzophenones-free / Silicon oil-free)
- ❖ Eco-Friendly products (Microbeads-free)
- Only for body

Original Body Scrub (5 scents)

plu

CARE BY NATURE



- **Berry Mix** : Fresh berry fragrance with raspberry extract and acai berry extract



- **Coconut** : Sweet coconut fragrance with coconut water, cacao nibs and argan oil



- **White Musk** : Gorgeous white musk fragrance with rosa damascene flower water, macadamia seed oil and avocado oil



- **Pomegranate** : Pomegranate fragrance with pomegranate extract, pomegranate seed oil and honey extract.



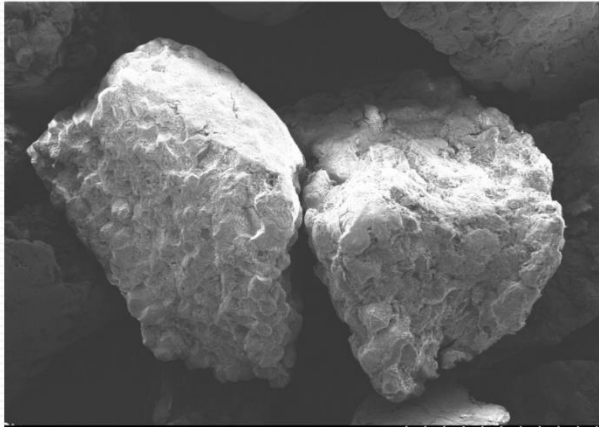
- **Rosemary Herb** : Fresh herb fragrance with chamomile extract, rose extract and herb extract.



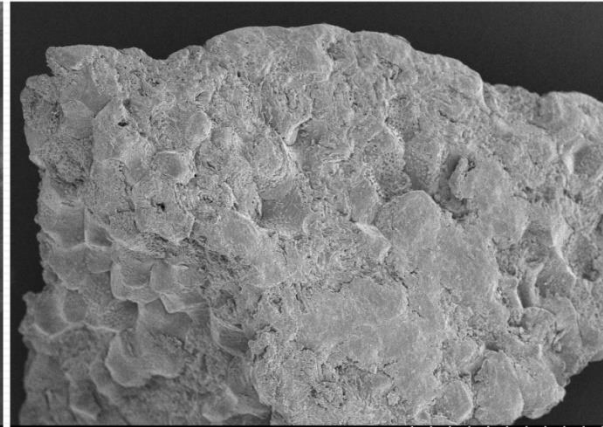
Walnut Shells



Check out the walnut shells with your own eyes!



A 3.0kV x200 SE(M)



A 3.0kV x400 SE(M)

Exfoliation effect of walnut shells, check out with the microscope!

- Fine pores that can be seen with the microscope, porous walnut shell
- It is very hard, unlike other items such as grains, sugar, salt, etc., that become mushy after use
- The surface is relatively smooth when compared to crab shells or shells of other crustaceans, reducing skin scratches. Gentler exfoliation is possible.
- Soft walnut shell powder is very gentle on skin, yet has excellent exfoliation and dissociative absorption effects of dirt.



What is dissociative effect?

When cleansing the body using the scrub, walnut shells absorb dead skin cells and dirt to eliminate them from skin.

Before and After Video



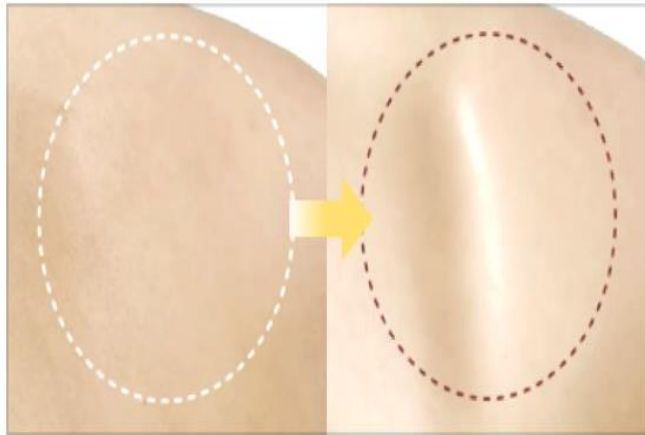
Before and After picture



elbow



heel



back



knee / leg

Original Scrub Wash

plu

CARE BY NATURE

This refreshing daily scrub wash whisk away dullness and flakes as it recharges skin, leaving a buffed glow. The luxurious scent from raspberry mint, grapefruit peach and lime grape calm the senses.

Highly moisturizing and gentle exfoliating formula blend leaves skin soft, smooth, and nourished after every wash.



Raspberry Mint

Grapefruit Peach

Lime Grape

- ❖ Formulated with 0.55% of natural soft California walnut shell contained
- ❖ Fresh fruit extracts and cosmetic grade finely grounded walnut powder exfoliate without irritation
- ❖ Formulated with raspberry, peach, orange, green grape extract to clarify pores with micro bubble
- ❖ All worry-free (Paraben-free / Benzophenones-free / Silicon oil-free)
- ❖ Eco-Friendly products (Microbeads-free)

•Only for body

Scrub Wash (3 scents)

plu
CARE BY NATURE



- **Grapefruit Peach :**
Sweet grapefruit scent with peach extract, orange extract and pomegranate extract

- **Lime Grape :**
Fresh citrus scent with super food black currant, lime extract and green grape extract

- **Raspberry Mint :**
Fresh raspberry scent with raspberry extract and fresh peppermint extract

Original Facial Scrub

plu

CARE BY NATURE

Two types: Tone up soft peeling gel_gommage type (Moisture and brightening peeling gel)
Nourishing & Moisturizing peeling scrub (Soft honey sugar)

Gentle exfoliating formula blend leaves skin soft and brightening without causing excessive skin irritation skin.

Purifies pores, diminishes dullness and improves elasticity for more youthful looking skin due to contained natural extract ingredients likes honey, shea butter, peach, rosehip oil and pomegranate



- ❖ Moisture and brightening peeling gel boost up skin radiance , brightener and polishing skin by effectively exfoliating without any irritation.
- ❖ Formulated with natural ingredients such as rosehip, peach and natural honey gives nutritious and moisturizes and clarify pores
- ❖ All worry-free (Paraben-free / Benzophenones-free / Silicon oil-free)
- ❖ Eco-Friendly products (Microbeads-free)

•Only for face

Facial Scrub (3 scents)



- **Peach** : Formulated with natural cleansing ingredients extracted from peach with no chemical ingredients.



- **Rosehip oil** : Combines with the action of Bio Rose Hip Oil regenerates and stimulate s cell renewal and makes the skin clean and smooth without damaging it .



- **Manuka Honey**: Propolis, Natural honey sugar and natural oil helps hydrate, nourish, brighten and revitalize the skin, leaving the skin smooth, supple and dewy.

Thank you 😊